

5/15/2017

1

RepOne, Cold Spring, NY 2016,  
All rights reserved



# Claim Awareness & Documentation for Project Managers

Strategies & Implementations for Disrupted Production  
Cycles

5/15/2017

2

RepOne, Cold Spring, NY 2016,  
All rights reserved



# What is delay?

5/15/2017

RepOne, Cold Spring, NY 2016,  
All rights reserved

3



Delays are easily represented by  
start and stop.

5/15/2017

4

RepOne, Cold Spring, NY 2016,  
All rights reserved



# What is disruption?

5/15/2017

RepOne, Cold Spring, NY 2016,  
All rights reserved

5



**Disruption** = decreased  
productivity

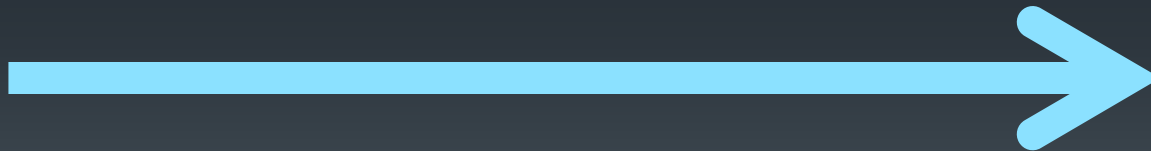
5/15/2017

RepOne, Cold Spring, NY 2016,  
All rights reserved

6



*Two paths ...*



5/15/2017

7

RepOne, Cold Spring, NY 2016,  
All rights reserved



Ribbons \ Phases	2014	2015	2016	2017	2018
DEP SHAFT-U04A					
DEP SHAFT-U05A					

slip

Two red arrows originate from the word 'slip' and point to the orange bars in the table rows for DEP SHAFT-U04A and DEP SHAFT-U05A.

5/15/2017

8

RepOne, Cold Spring, NY 2016,  
All rights reserved



Ribbons \ Phases	4/2015	5/2015	6/2015	7/2015	8/2015	9/2015	10/2015
S3B06704G-base-3		[Orange bar spanning from 5/2015 to 9/2015]					
S3B120-02G- up 01		[Orange bar spanning from 5/2015 to 10/2015]					

-started early, ended late





Base  
Contract



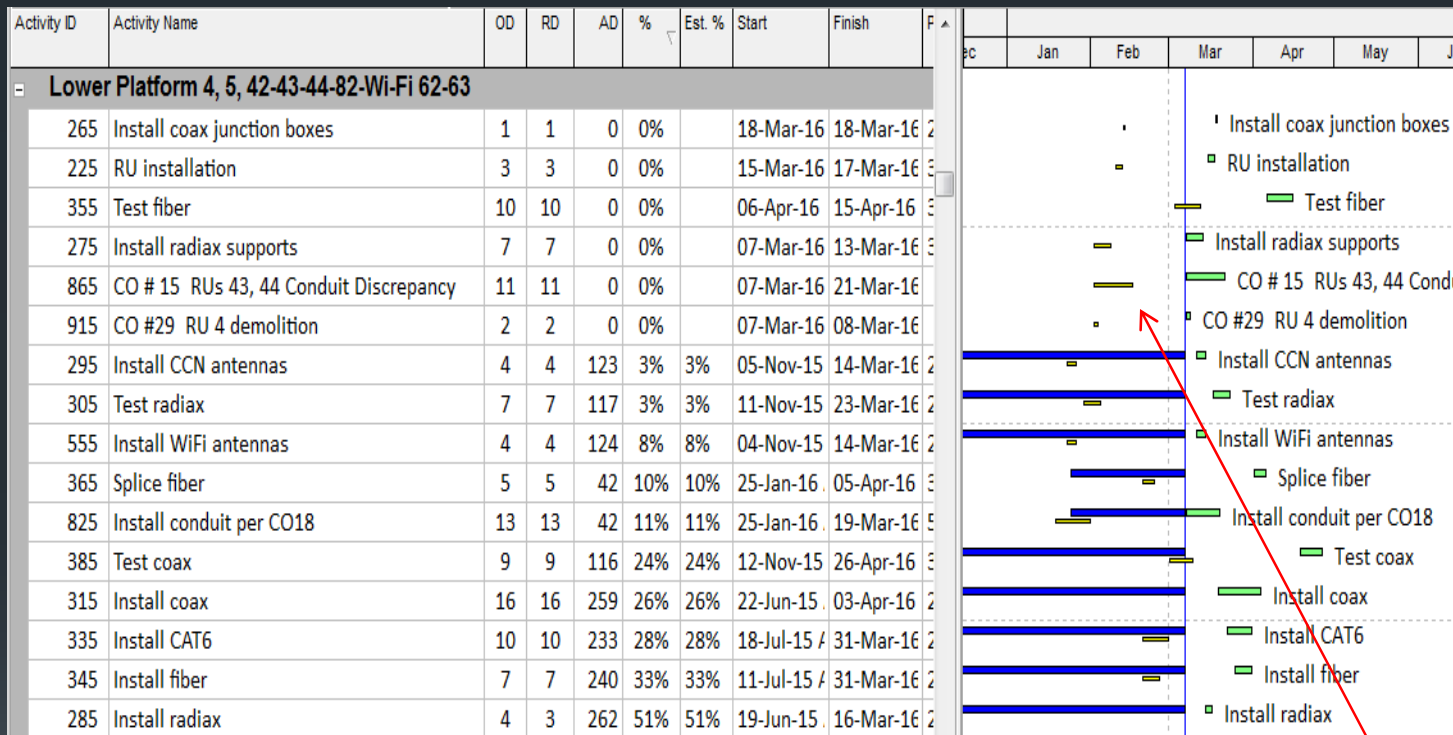
Decreased  
productivity

Disruption

Activity ID	Activity Name	OD	RD	AD	%	Est. %	Start	Finish	F
<b>Lower Platform 4, 5, 42-43-44-82-Wi-Fi 62-63</b>									
265	Install coax junction boxes	1	1	0	0%		18-Mar-16	18-Mar-16	2
225	RU installation	3	3	0	0%		15-Mar-16	17-Mar-16	3
355	Test fiber	10	10	0	0%		06-Apr-16	15-Apr-16	3
275	Install radiax supports	7	7	0	0%		07-Mar-16	13-Mar-16	3
865	CO # 15 RUs 43, 44 Conduit Discrepancy	11	11	0	0%		07-Mar-16	21-Mar-16	3
915	CO #29 RU 4 demolition	2	2	0	0%		07-Mar-16	08-Mar-16	3
295	Install CCN antennas	4	4	123	3%	3%	05-Nov-15	14-Mar-16	2
305	Test radiax	7	7	117	3%	3%	11-Nov-15	23-Mar-16	2
555	Install WiFi antennas	4	4	124	8%	8%	04-Nov-15	14-Mar-16	2
365	Splice fiber	5	5	42	10%	10%	25-Jan-16	05-Apr-16	3
825	Install conduit per CO18	13	13	42	11%	11%	25-Jan-16	19-Mar-16	3
385	Test coax	9	9	116	24%	24%	12-Nov-15	26-Apr-16	3
315	Install coax	16	16	259	26%	26%	22-Jun-15	03-Apr-16	2
335	Install CAT6	10	10	233	28%	28%	18-Jul-15	31-Mar-16	2
345	Install fiber	7	7	240	33%	33%	11-Jul-15	31-Mar-16	2
285	Install radiax	4	3	262	51%	51%	19-Jun-15	16-Mar-16	2

Update AD tells the tale





Slip evident in baseline

5/15/2017

12

RepOne, Cold Spring, NY 2016,  
All rights reserved

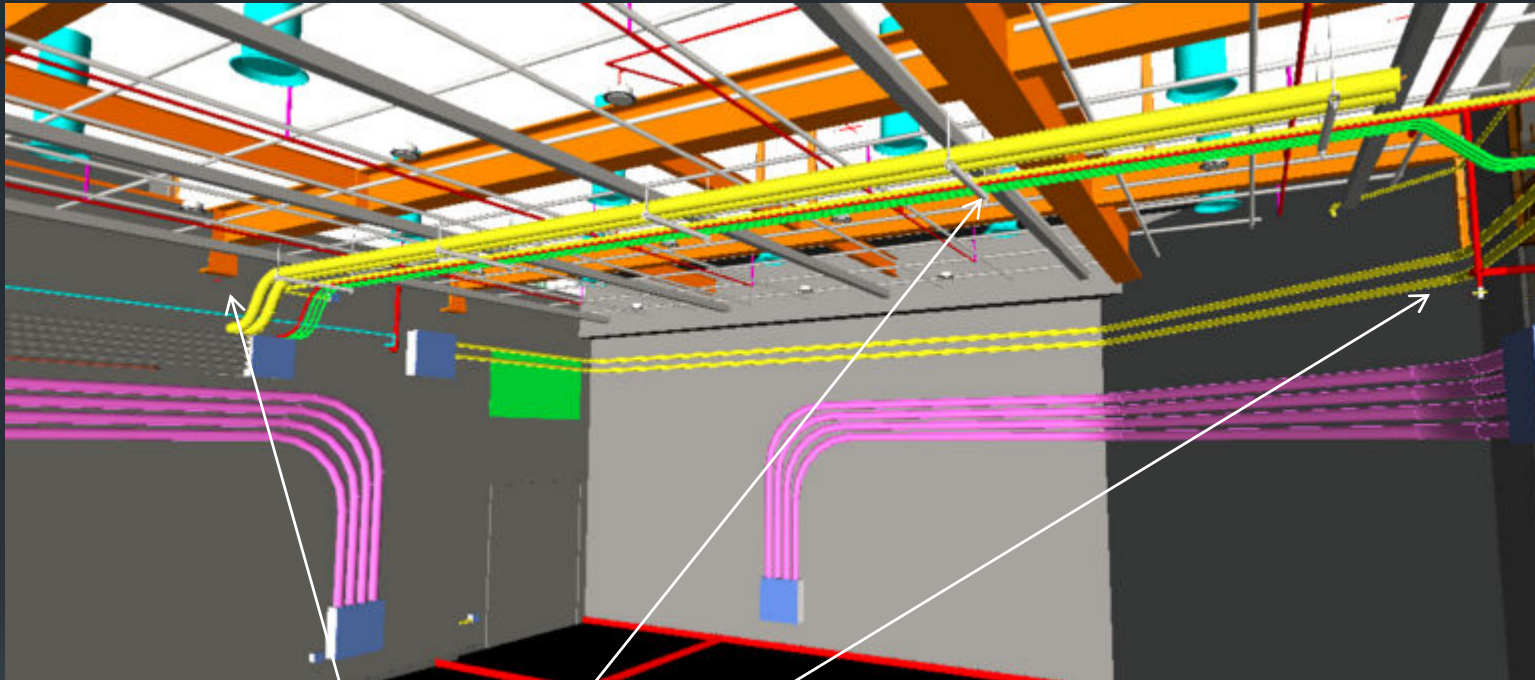


# Claim Inception

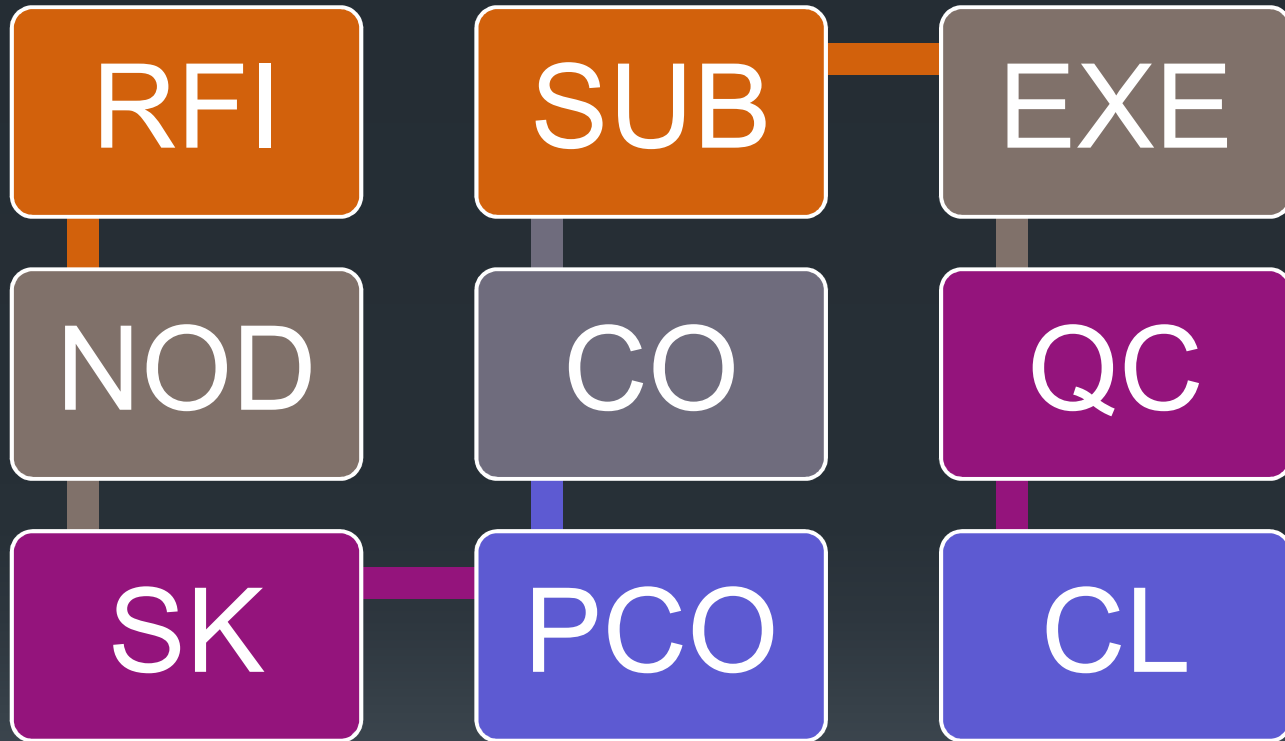
5/15/2017

13

RepOne, Cold Spring, NY 2016,  
All rights reserved



Field condition: program  
conflict



The claim path

5/15/2017

15

RepOne, Cold Spring, NY 2016,  
All rights reserved



# Documentation

5/15/2017

16

RepOne, Cold Spring, NY 2016,  
All rights reserved



Daily Reports  
= mn/hr tallies



5/15/2017

17

RepOne, Cold Spring, NY 2016,  
All rights reserved



LINE #	LINE ITEM DESCRIPTION	HRS ASSIGNED	HRS USED	HRS LEFT	% TO DATE	FRI	SAT
						12/11/2015	12/12/2015
1.00	GENERAL CONDITIONS	2,571.00	3824	-1253	149%		
2.00	MOBILIZATION	495.00	495	0	100%		
3.00	ALLOWANCES	162.00	0	162	0%		
4.00	TOWER	2,511.99	5679	-3167.006	226.08%	72	
5.00	ROOF	234.47	64	170.465	27.30%		
6.00	UPPER & LOWER PLATFORMS	14,052.01	16677	-2624.986	118.68%		
7.00	MAIN DINING & CONCOURSE + U&L PLATFORMS	3,529.22	7642	-4112.784	216.54%	72	184
8.00	MAIN DINING & CONCOURSE	3,153.27	1824	1329.2715	57.84%	24	
9.00	PAT	5,090.81	1267	3823.805	24.89%		
10.00	PAT: HIGH RAILS WITH OPERATOR	2,342.00	2256	86	96.33%		
11.00	POWER PLANT	337.95	720	-382.0485	213.05%		
12.00	STEAM TUNNEL	584.60	256	328.5965	43.79%		
		35,064.31	36,385.00	6,004.13	103.77%	168	184
	Delay						
	<b>DOWNTIME</b>		<b>1,242.50</b>				
		35,064.31	40,704.00	-5,639.69	12.73		
				5900.138			

# Mn/hr tallies

5/15/2017

18

RepOne, Cold Spring, NY 2016,  
All rights reserved



### REQUEST FOR INFORMATION AND CHANGE ORDER LOG

PROJECT NAME: WASTE WATER TREATMENT PLANT IMPROVEMENT PROJECT  
PROJECT NUMBER: C-06-4926-110

RFI NO.	CCO NO.	BRIEF DESCRIPTION OF ISSUE	DATE SIGNED BY CONTRACTOR	DATE RECEIVED BY GSD	DATE FWD TO LACO	DATE RESPONSE FROM LACO	DATE RESPONSE TO CONTRACTOR	RESOLVED W/O CCO?
	1	<b>Davis Bacon Wage determinations</b>	<b>Pending</b>					YES
1		<b>Fort Brag Electric #1</b>		<b>12/14/09</b>			<b>12/14/09</b>	YES
2		<b>Fort Brag Electric #2</b>		<b>12/14/09</b>			<b>12/14/09</b>	YES
3		<b>T&amp;S #3</b>		<b>12/14/09</b>			<b>12/18/09</b>	YES
4		<b>T&amp;S # 3 / GSD # 4 Wier Box change</b>		<b>12/14/09</b>			<b>12/18/09</b>	YES
5		<b>T&amp;S # 4 / GSD # 5 24" CPVC</b>		<b>12/14/09</b>			<b>12/16/09</b>	YES

# RFI log

5/15/2017

19

RepOne, Cold Spring, NY 2016,  
All rights reserved



BASE  
CONTRACT

C.O. WORK

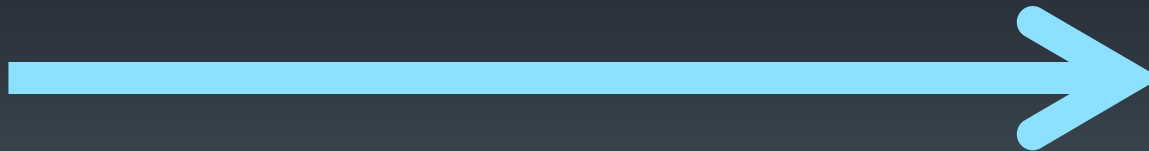
5/15/2017

20

RepOne, Cold Spring, NY 2016,  
All rights reserved



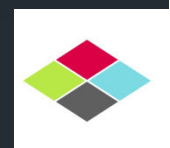
*Two paths ...*



5/15/2017

21

RepOne, Cold Spring, NY 2016,  
All rights reserved



A	B	C	D	E	F	G	H	I	J
CO #	Type of change	RU's	Area	Description	manhours		crew size		Days
Change Order 9	Extra Work	52,53,54,55	PAT	86th st AT&T Removal	102		4		3.19
		26,27,28,29,30,31,							
Change Order 13	Change Order	32,33,47,64	Tower	EMT to RGS Swap	1342.33		6		27.97
Change Order 15	Change Order		Main Dining & Low	Conduit Discrepancy	235.4		3		9.81
Change Order 15	Change Order	RU2	Main Dining & Low	Conduit Discrepancy	138.37		3		5.77
Change Order 15	Change Order	RU3	Main Dining & Low	Conduit Discrepancy	97.03		3		4.04
Change Order 15	Change Order		Upper Level	Conduit Discrepancy	75.2		3		3.13
Change Order 15	Change Order	RU7	Upper Level	Conduit Discrepancy	56.84		3		2.37
Change Order 15	Change Order	RU8	Upper Level	Conduit Discrepancy	18.36		3		0.77
Change Order 15	Change Order		Main Dining	Conduit Discrepancy	225.96		3		9.42
Change Order 15	Change Order	RU35	Main Dining	Conduit Discrepancy	15.96		3		0.67
Change Order 15	Change Order	RU36	Main Dining	Conduit Discrepancy	210		3		8.75
Change Order 15	Change Order		Lower Platform	Conduit Discrepancy	250.96		3		10.46
Change Order 15	Change Order	RU43	Lower Platform	Conduit Discrepancy	138.28		3		5.76
Change Order 15	Change Order	RU44	Lower Platform	Conduit Discrepancy	112.68		3		4.70

# PCO/CO log

5/15/2017

22

RepOne, Cold Spring, NY 2016,  
All rights reserved



# Inside dope

5/15/2017

23

RepOne, Cold Spring, NY 2016,  
All rights reserved



# Criteria



# Project Criteria

- Contract Documents
- Requirements
- Notice to Proceed
- Milestones
- Constraints
- Substantial Completion



5/15/2017

25

RepOne, Cold Spring, NY 2016,  
All rights reserved



5/15/2017

26

RepOne, Cold Spring, NY 2016,  
All rights reserved



# “Which schedule... ?

5/15/2017

27

